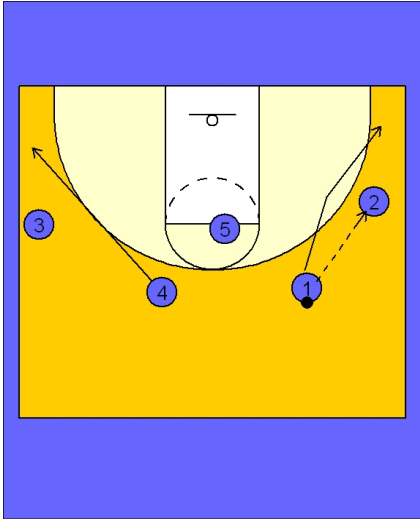




**Set play vs. zone def (2)**

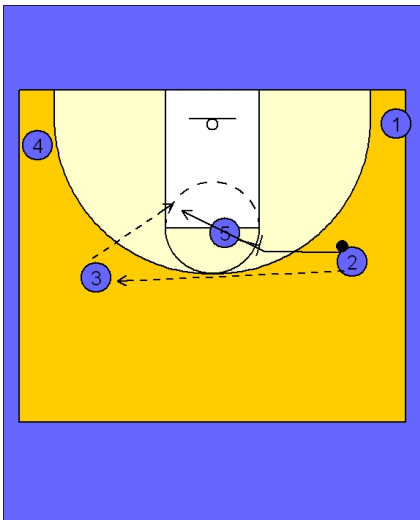


**Connecticut Women Set Play vs. Zone Defense**

2 - 3 high alignment to begin.

#1 passes to #2 on the right wing and then cuts to the ball side corner.

#4 cuts to the opposite corner area.



**Connecticut Women Set Play vs. Zone Defense**

#2 reverses the ball across the top to #3.

#5 sets a back screen on the top defender while #2 cuts in the mid - high post area looking for the open jumper.