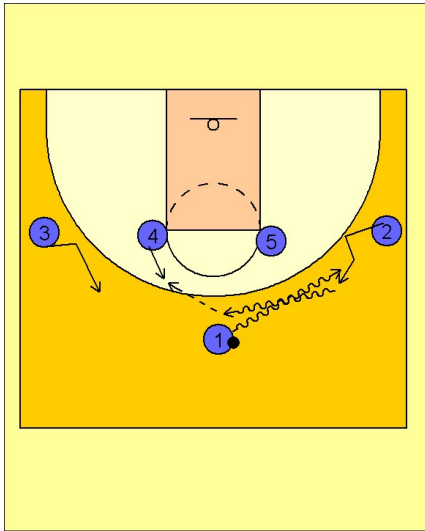


Connecticut wom

Set play (1)

1



Connecticut Women Set Play vs. Man Defense

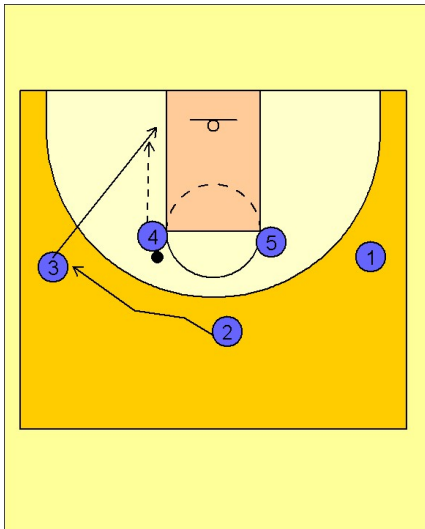
1 - 4 high alignment to begin.

#1 starts the play with a dribble handoff with #2 on the right wing.

#2 takes the ball and dribbles to the top. #3 and #4 start to move up to receive the pass.

#2 enters the ball to #4.

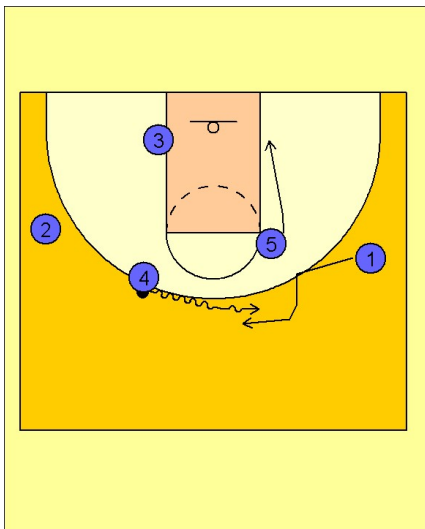
2



Connecticut Women Set Play vs. Man Defense

On the pass to #4, #3 backcuts while #2 cuts over the top to the left wing spot just vacated by #3. #4 looks for the quick backdoor pass to #3.

3



Connecticut Women Set Play vs. Man Defense

If #3 is not open, #4 dribbles at #1 on the right wing. As #1 moves to the middle to receive the dribble handoff from #4, #5 moves down to the right low block.

Set play (1)

4

Connecticut Women Set Play vs. Man Defense

As #1 takes the handoff from #4, #2 looks to backcut while #3 comes off the double staggered downscreen from #5 and #4.

