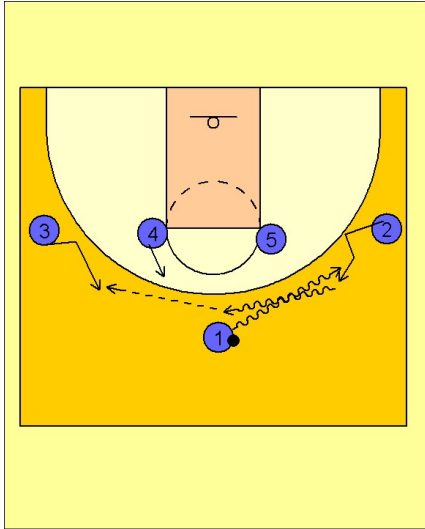


Connecticut wom

Set play (2)

1



Connecticut Women Set Play vs. Man Defense

This is another option they use off the same play as Set Play (1).

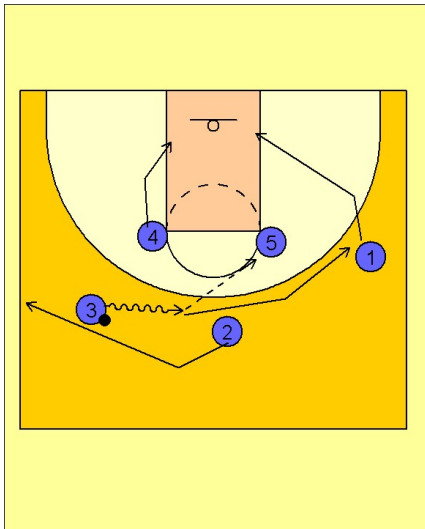
1 - 4 high alignment to begin.

#1 starts the play with a dribble handoff with #2 on the right wing.

#2 takes the ball and dribbles to the top. #3 and #4 start to move up to receive the pass.

#2 enters the ball to #3.

2

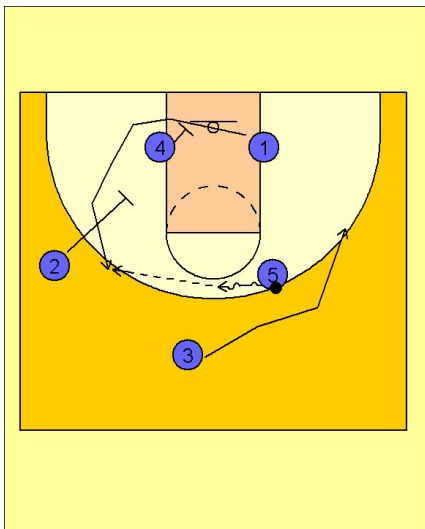


Connecticut Women Set Play vs. Man Defense

#3 takes the ball to the middle and enters the ball to the post player #5.

#1 backcuts while #3 cuts over the top to the right wing spot just vacated by #1. #5 looks for the quick backdoor pass to #1.

3



Connecticut Women Set Play vs. Man Defense

#5 puts the ball down toward the middle while #1 comes off either a single screen from #4 or a double staggered down screen from #4 and #2.