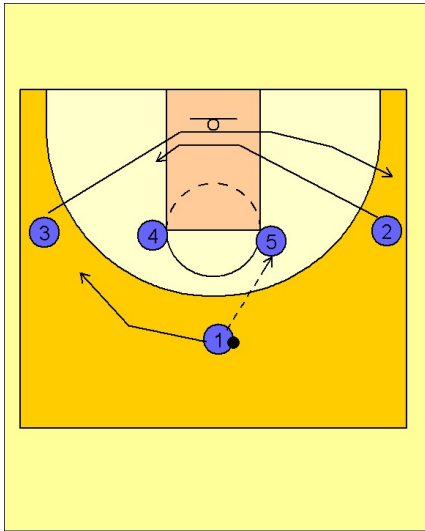


# Connecticut wom

## Set play (3)

1



Connecticut Women Set Play vs. Man Defense

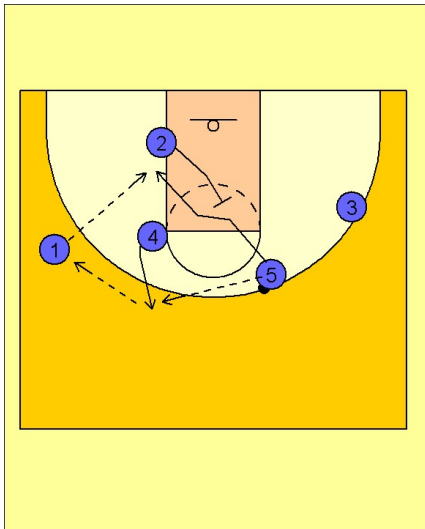
1 - 4 high alignment to begin.

#1 enters the ball to #5 in the high post elbow.

#3 and #2 interchange with #3 breaking out to the right wing and #2 breaking down and under to the left low block area.

#1 fills to the left wing area.

2

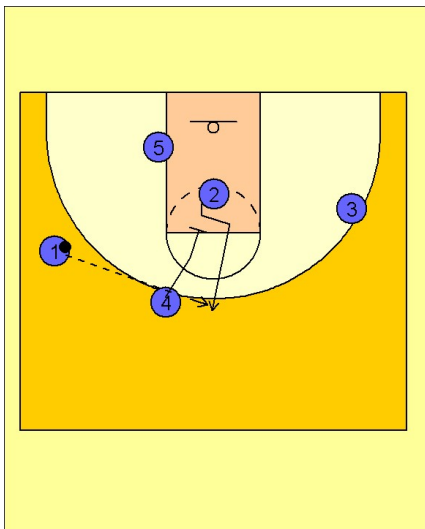


Connecticut Women Set Play vs. Man Defense

#4 now steps out and receives the next pass from #5. #4 then passes to #1 on the left wing.

#2 moves up to set a backscreen for #5 who cuts to the ballside low block looking for the post entry pass from #1.

3



Connecticut Women Set Play vs. Man Defense

If #5 is not open, #4 sets a downscreen for #2 in the middle of the lane trying to free her for an open jumpshot on top.

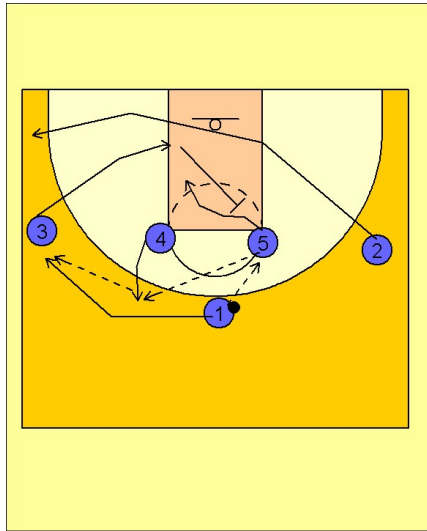
UCONN will also run this play again except in the beginning, when #2 and #3 interchange, #2 will cut out to the left corner area while #3 cuts down to the left low block and becomes the person who sets the backscreen for the post player.

# Connecticut wom

## Set play (3)

4

Connecticut Women Set Play vs. Man Defense



UConn will also run this play again except in the beginning, when #2 and #3 interchange, #2 will cut out to the left corner area while #3 cuts down to the left low block and becomes the person who sets the backscreen for the post player.