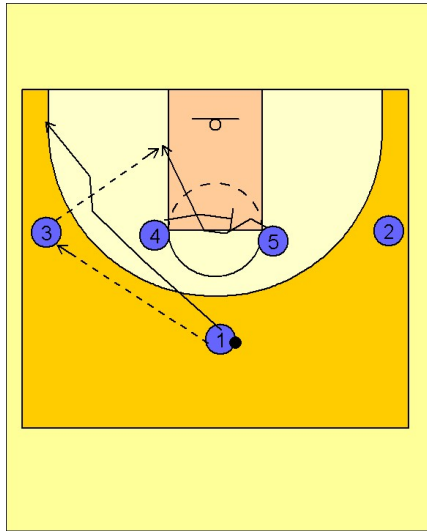


Connecticut wom

Set play (4)

1



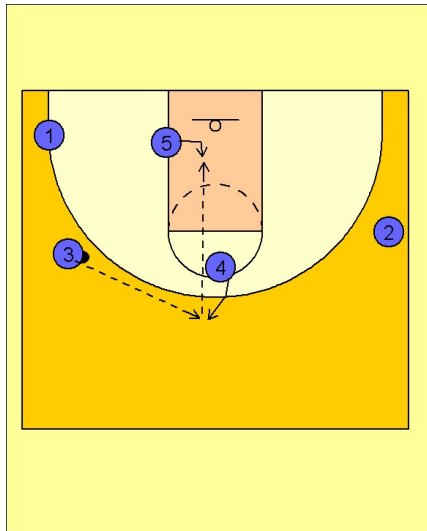
Connecticut Women Set Play vs. Man Defense

1 - 4 high alignment to begin.

#1 enters the ball to the wing player #3 and then cuts to the ballside corner area.

On the pass to the wing, #4 turns and sets a screen on the right elbow area for #5. #5 curls over the top of the screen and looks to receive the post entry pass from #3 on the left low block area.

2



Connecticut Women Set Play vs. Man Defense

If #5 is not open, #4 steps out and they look to isolate #5 inside in the lane.