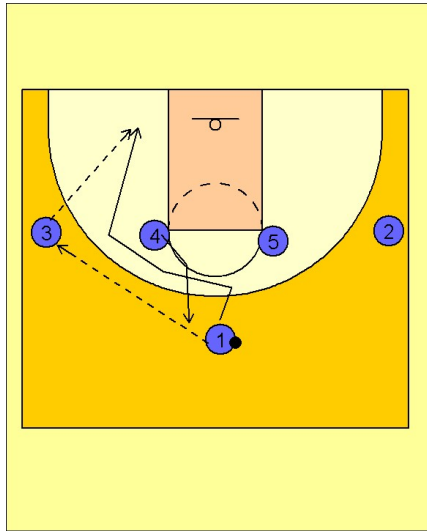


Connecticut wom

Set play (5)

1



Connecticut Women Set Play vs. Man Defense

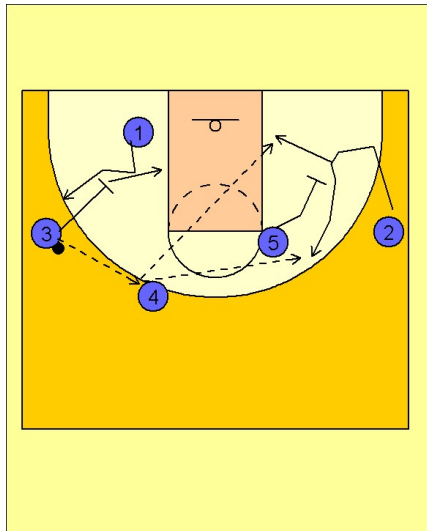
1 - 4 high alignment to begin.

#1 enters the ball to the wing player #3 and then fakes cutting away and then cuts back to the ballside low block area.

On the pass to the wing, #4 breaks out to the top.

#3 looks for #1 cutting down the lane line for the potential shot.

2



Connecticut Women Set Play vs. Man Defense

If #1 is not open, #3 passes to #4 on top.

On the pass, #3 is then downscreening for #1 on the left low block area while #5 screens away for #2 on the right wing area.

Wing players read the screens and the screeners react to how the wing players use the screen.