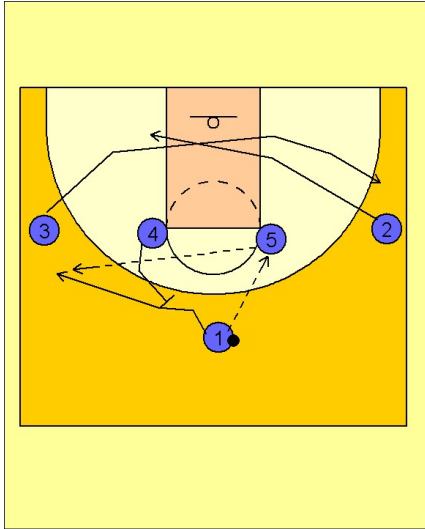


Connecticut wom

Set play (6)

1



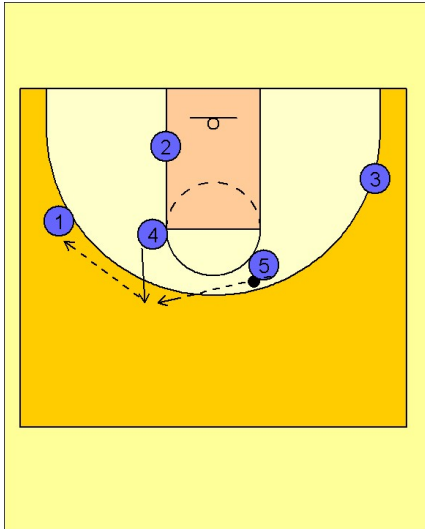
Connecticut Women Set Play vs. Man Defense

1 - 4 high alignment to begin.

#1 enters the ball to #5 and uses a backscreen from #4 to try to get open on the left wing. #5 will throw the pass over the top if she feels #1 is open for a shot.

As this is happening, #3 and #2 interchange with #3 breaking out to the right wing while #2 stops on the left low block area.

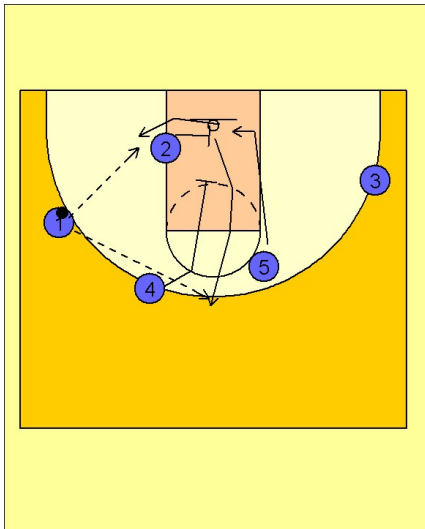
2



Connecticut Women Set Play vs. Man Defense

#4 now steps out to receive the pass from #5. #4 then passes to #1 on the left wing.

3



Connecticut Women Set Play vs. Man Defense

Often, #2 will set a backscreen for #5 on this play, but here we see #5 cutting down to the opposite low block and then using the cross screen from #2 to try to get open on the ballside low block.

#1 will look to feed #5 on the left block or look for #2 coming off the downscreen from #4.