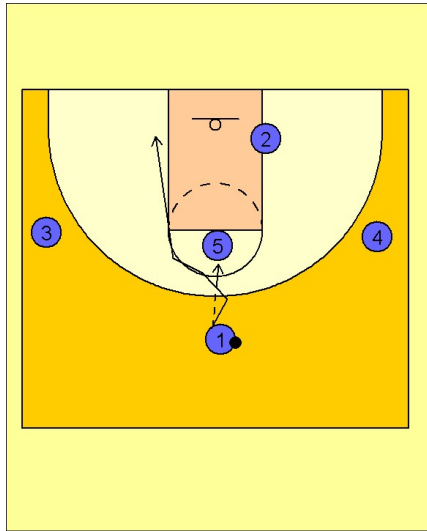


Connecticut wom

Set play (7)

1

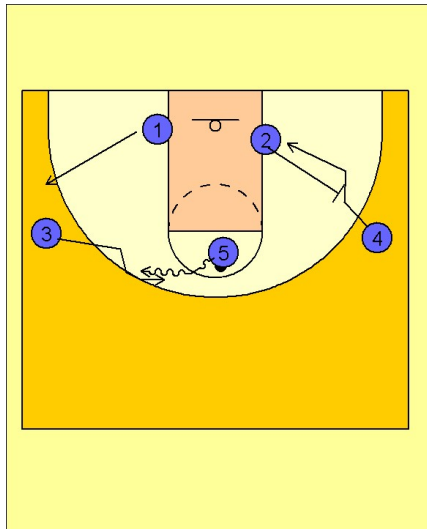


Connecticut Women Set Play vs. Man Defense

1 - 3 - 1 alignment to begin.

#1 enters the ball to #5 in the high post and cuts to the left low block opposite #2. #5 could look to make a handoff with #1 if she got open on the cut to the basket.

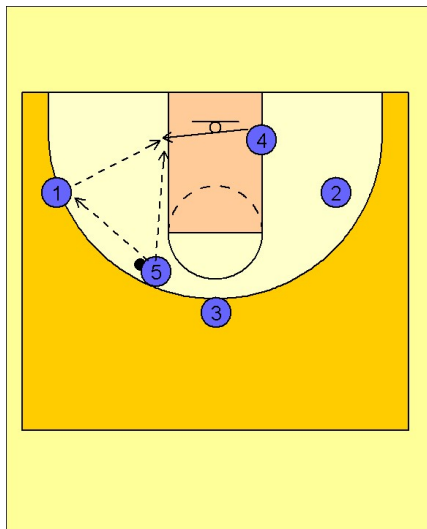
2



Connecticut Women Set Play vs. Man Defense

#5 now turns and executes a dribble handoff with #3 on the left wing. As this is happening, #2 is stepping out and setting a backscreen for #4 on the right wing and #1 is breaking out to the left wing.

3



Connecticut Women Set Play vs. Man Defense

If #5 keeps the ball on the dribble handoff, he will look to hit #4 breaking across the lane off the backscreen from #2. #5 may also hit #1 on the left wing for a better passing angle into the post.

Connecticut wom

Set play (7)

4

Connecticut Women Set Play vs. Man Defense

If #3 gets the ball from #5 on the handoff, she will turn the corner and look to get into the lane to score or drive and kick out to #2 on the right wing or dump the ball inside to #4.

