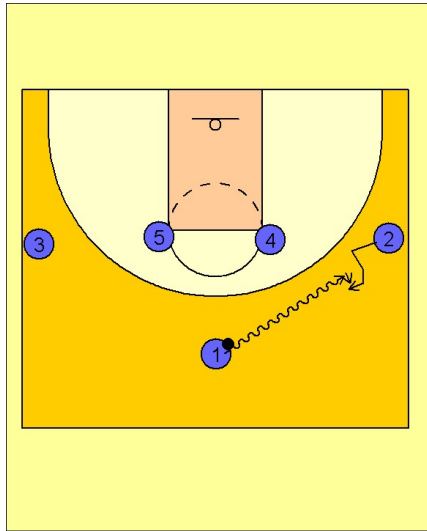


Connecticut wom

Set play (9)

1

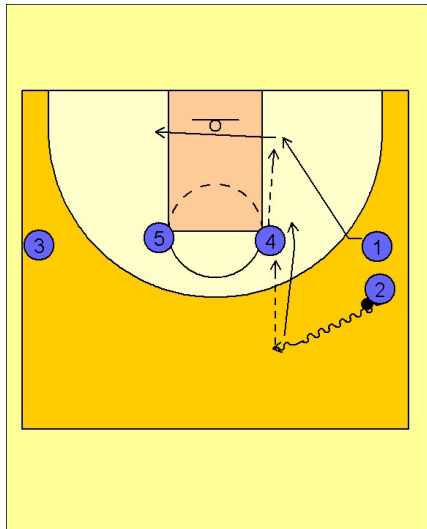


Connecticut Women Set Play vs. Man Defense

1 - 4 high set to begin.

#1 dribbles at #2 on the right wing and executes a dribble handoff.

2



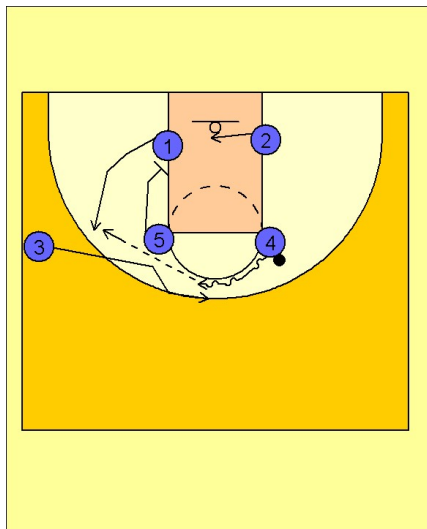
Connecticut Women Set Play vs. Man Defense

#2 takes the ball and begins to center the ball on the dribble. She quickly enters the ball to the high post player #4. As #4 catches, #1 is cutting backdoor and looks for the pass from #4.

If #1 does not receive the pass, she will cut across the lane to the opposite block.

#2 passes and cuts backdoor looking for the handoff from #4.

3



Connecticut Women Set Play vs. Man Defense

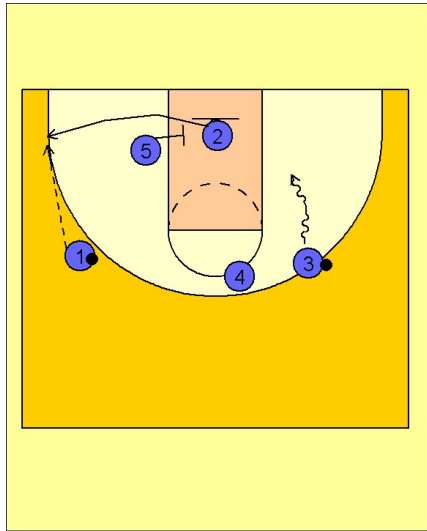
#1 will now get a downscreen from #1 as #4 dribbles the ball over to execute a dribble handoff with #3 on top.

#4 is also looking to hit #1 coming off the downscreen from #5.

Connecticut wom

Set play (9)

4



Connecticut Women Set Play vs. Man Defense

If #4 passed the ball to #1 and #1 did not have a shot, #5 would continue screening and set a pick for #2 cutting across the lane and out to the ballside corner area for the shot.

If #4 gave the ball to #3 on the dribble handoff, #3 would look to catch and shoot or attack the cleared out lane area on the dribble drive.